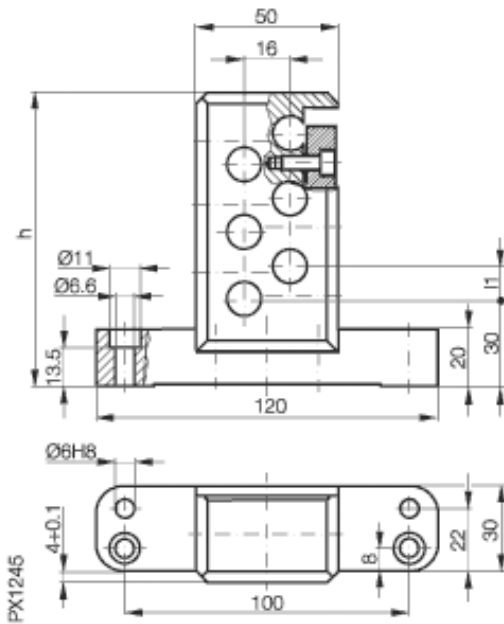


## Accessories: Mounting unit BES 12.0-KB-602-06-12



| Anzahl der Schaltstellen n | 2  | 4  | 6   |
|----------------------------|----|----|-----|
| bei H = 12 mm              | 57 | 81 | 105 |
| bei H = 16 mm              | 57 | 93 | 125 |

### Common Data

Version  
Usable with

Ambient temperature

Clamp  
Clamp for holding inductive proximity switches in cylindrical housings M12 flush mount  
-25°C...+70°C

### Mechanical Data

Measurements WxHxD or Dia x D  
Material  
Mounting

120x30  
epoxy resin - fiberglass, green  
screw M5, zinc coated

Datasheet number::

Definitions see general catalog.  
If not otherwise noted, ratings according to IEC 60947-5-2 (DIN EN60947-5-2)

Balluff GmbH  
Schurwaldstrasse 9  
73765 Neuhausen a.d.F.  
Phone (07158) 173-0 Fax (07158) 5010

Datenblatt by CD-ROM - 04/2007

**BALLUFF**  
sensors worldwide